



STEWART
101 N TRYON ST
SUITE 1400
CHARLOTTE, NC 28202
T 704.334.7925
FIRM LICENSE #C-1051
S19191

SAMPSON COUNTY 911 & ES FACILITIES

CLINTON,
NORTH CAROLINA

CMU DETAILS

DATE: 12.04.2020
PROJECT NO: 20003

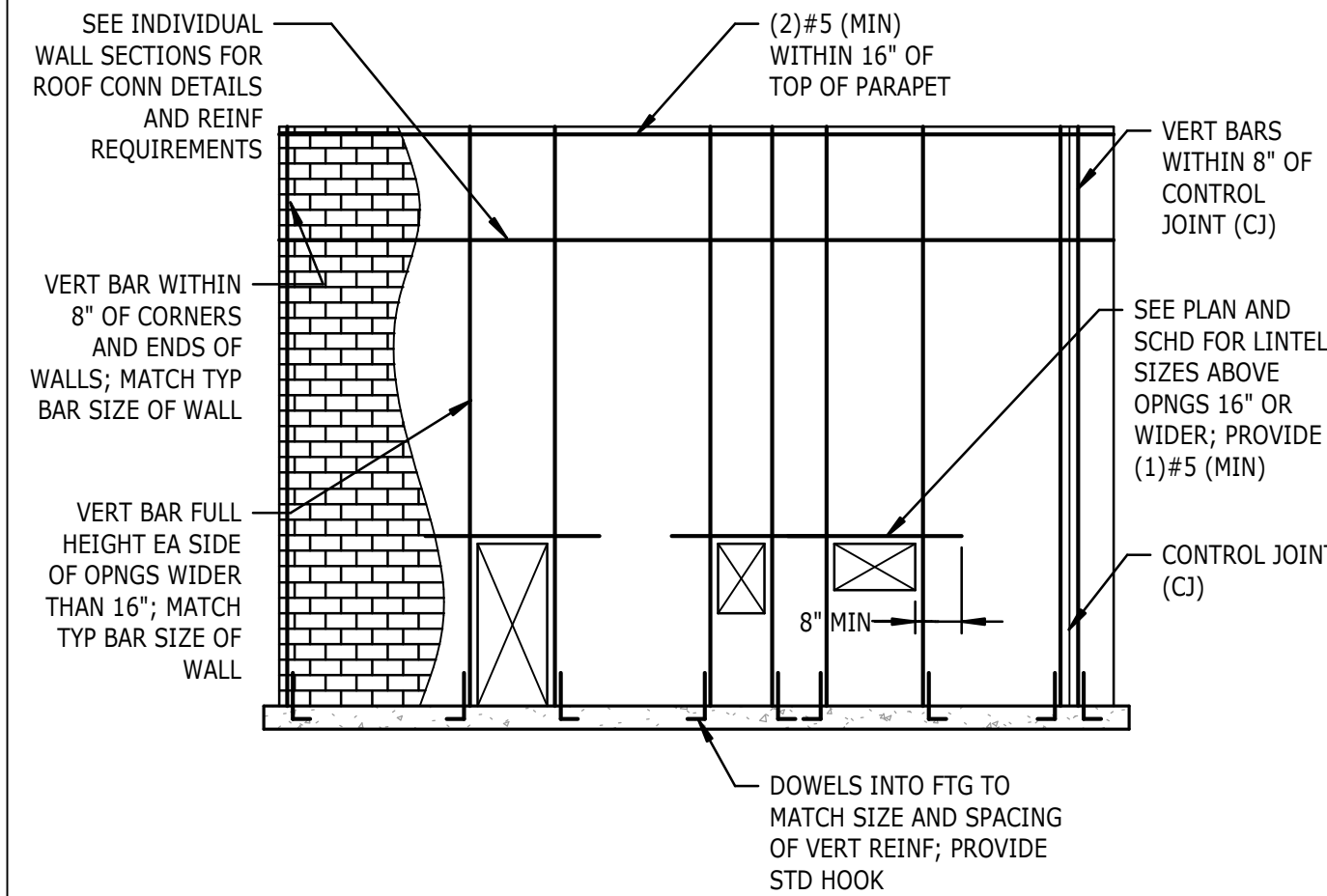
REVISIONS
NO: DATE: DESCRIPTION:

THIS DRAWING IS THE PROPERTY OF ADW ARCHITECTS, P.A. AND SHALL NOT BE REPRODUCED OR COPIED IN WHOLE OR PART. IT SHALL NOT BE USED ON ANY OTHER PROJECT OR GIVEN TO ANY OTHER COMPANY OR AGENCY WITHOUT THE CONSENT OF ADW ARCHITECTS, P.A.



SHEET NUMBER

S401

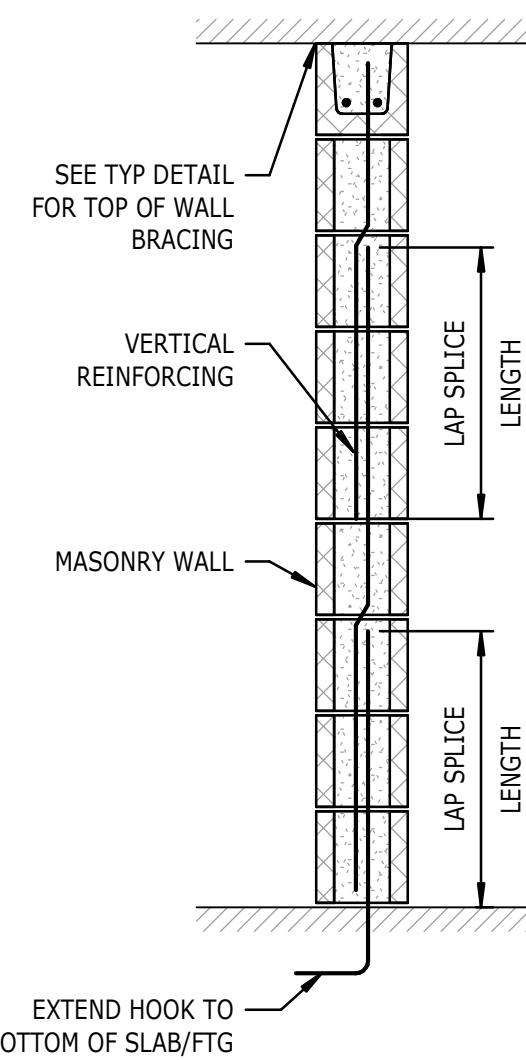


1 MINIMUM WALL REINFORCING

S401 3/4" = 1'-0"

- NOTES:
- REINFORCING SHOWN IS A MINIMUM REQUIREMENT. INDIVIDUAL WALL SECTION REINFORCING REQUIREMENTS (SUCH AS NUMBER OR SIZE OF BARS) SHALL TAKE PRECEDENCE OVER THE REQUIREMENTS SHOWN HEREIN. SEE INDIVIDUAL WALL SECTIONS AND SCHEDULES FOR VERTICAL REINFORCING REQUIREMENTS.
 - ALL DISCONTINUOUS REINFORCEMENT SHALL BE LAPPED PER MINIMUM SPLICE AND EMBEDMENT LENGTH SCHEDULE.
 - VERTICAL STEEL MUST BE SECURED IN PLACE BEFORE THE BLOCKS ARE LAID. ALL VERTICAL REINFORCEMENT SHALL BE CONTINUOUS THROUGH MASONRY LINTELS AND BOND BEAMS, UNLESS OTHERWISE NOTED.
 - AT OPENINGS WHERE STEEL BEAM LINTELS ARE PROVIDED, REINFORCE THE JAMB CELL TO THE BEARING ELEVATION OF THE LINTEL, AND REINFORCE THE NEXT ADJACENT CELL PAST THE END OF THE BEAM FULL HEIGHT AS SHOWN IN THIS DETAIL.
 - DETAIL DOES NOT APPLY TO INTERIOR NON-LOAD BEARING PARTITION WALLS.

BAR SIZE	LAP SPLICE
#3	18"
#4	24"
#5	30"
#6	36"
#7	42"
#8	48"



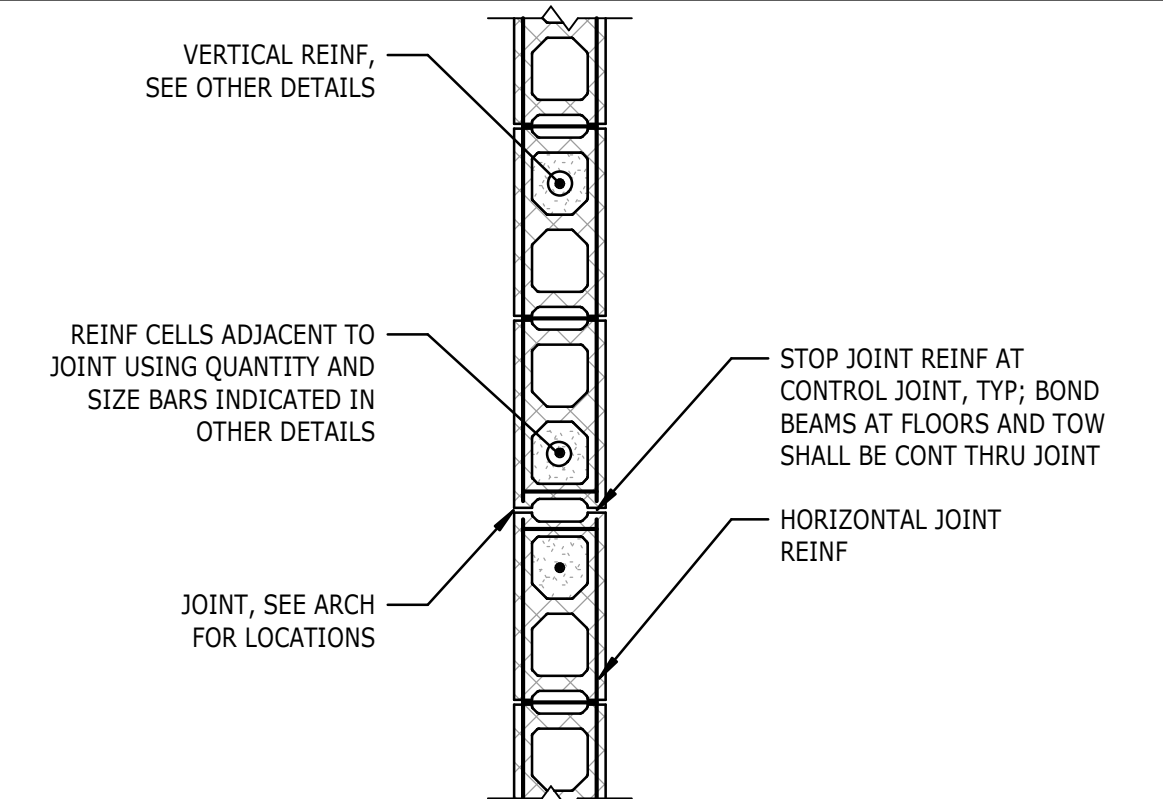
5 SPLICE AND EMBEDMENT LENGTH SCHEDULE

S401 3/4" = 1'-0"

- NOTES:
- PROVIDE DOWELS TO FOUNDATION MATCHING SIZE OF VERTICAL REINFORCING, TYPICAL. SEE GENERAL NOTES OR MINIMUM SPLICE AND EMBEDMENT LENGTH SCHEDULE FOR LAP REQUIREMENTS.

6 TYPICAL WALL CORNER

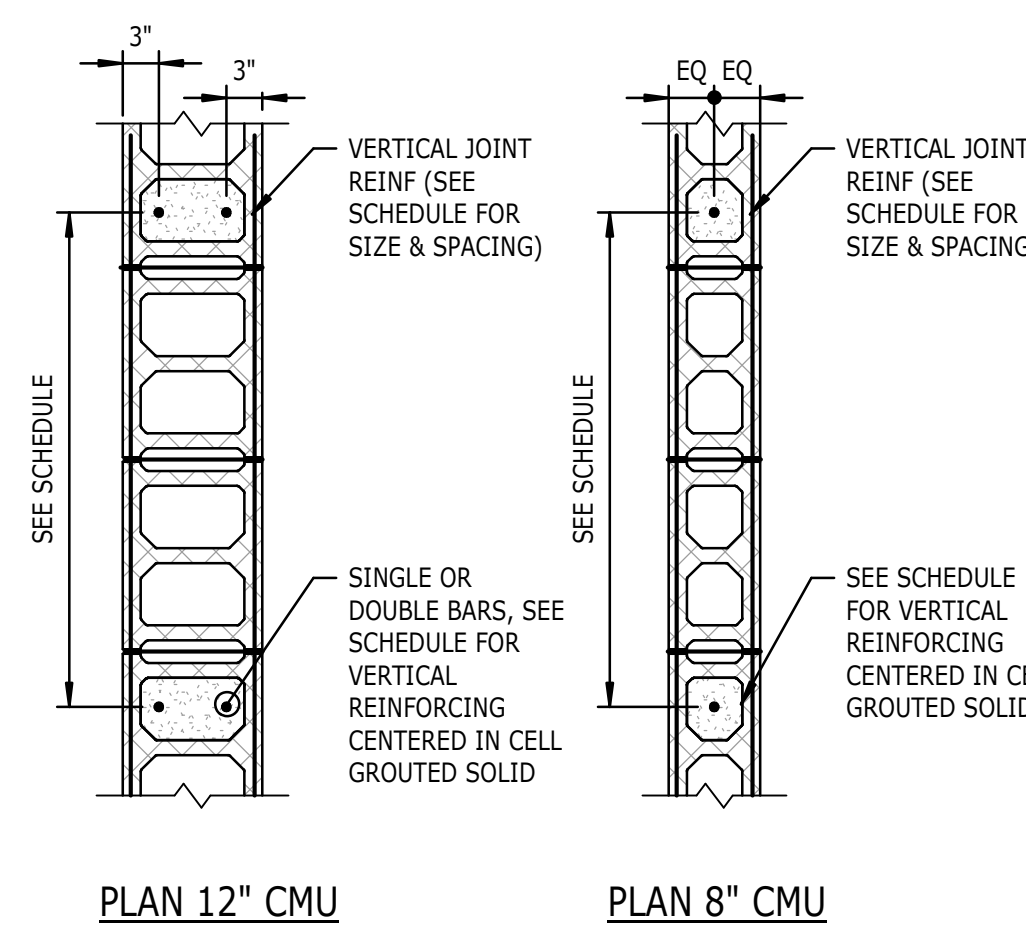
S401 3/4" = 1'-0"



- NOTES:
- PROVIDE DOWELS TO FOUNDATION MATCHING SIZE OF VERTICAL REINFORCING, TYPICAL. SEE GENERAL NOTES OR MINIMUM SPLICE AND EMBEDMENT LENGTH SCHEDULE FOR LAP REQUIREMENTS.
 - ALL CONTROL JOINT LOCATIONS SHALL BE COORDINATED WITH THE ARCHITECTURAL DRAWINGS. FOR INTERIOR PARTITION WALLS, JOINTS SHALL HAVE A MAXIMUM SPACING DETERMINED FROM THE LESSER OF 1 1/2 TIMES THE WALL HEIGHT AND 25 FEET. FOR STRUCTURAL WALLS, CONTACT THE ENGINEER OF RECORD IF JOINTS ARE NOT LOCATED ON PLAN.
 - CMU CONTROL JOINTS ARE NOT NECESSARILY LOCATED AT BRICK CONTROL JOINTS. DO NOT JUST INSTALL BEHIND BRICK CONTROL JOINTS.
 - WHERE CONTROL JOINTS ARE SHOWN AT SHEAR WALL LOCATIONS, PROVIDE THE CORRECT NUMBER OF END WALL REINFORCING ON EACH SIDE OF THAT JOINT AS SHOWN IN MASONRY WALL SCHEDULE.

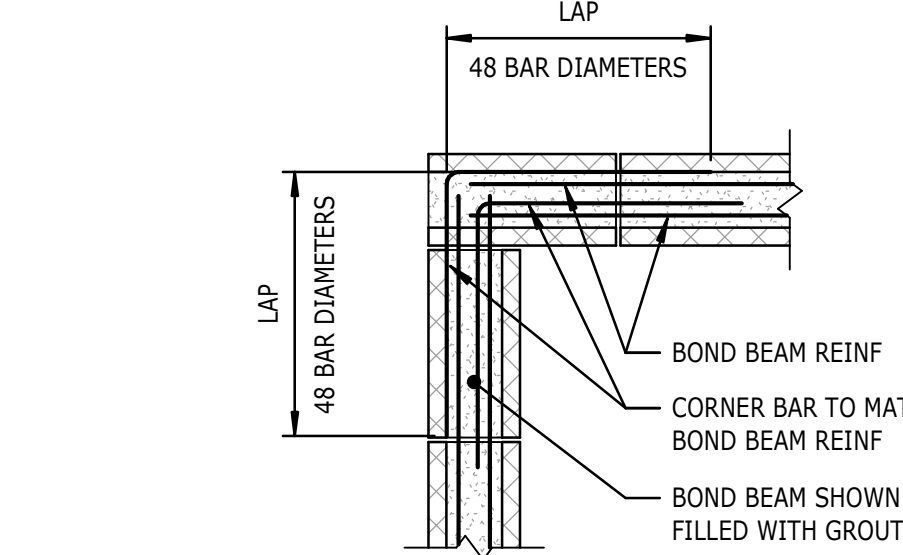
7 TYPICAL WALL CONTROL JOINT

S401 3/4" = 1'-0"



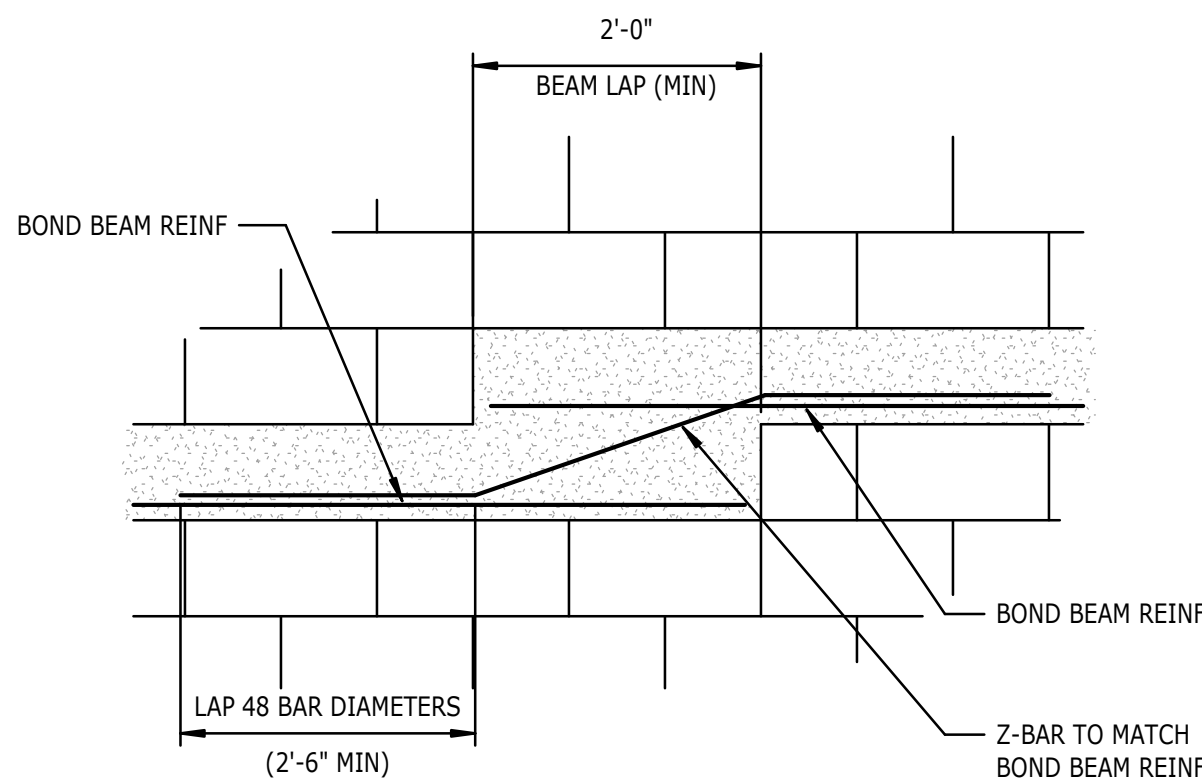
8 TYPICAL WALL REINFORCING

S401 3/4" = 1'-0"



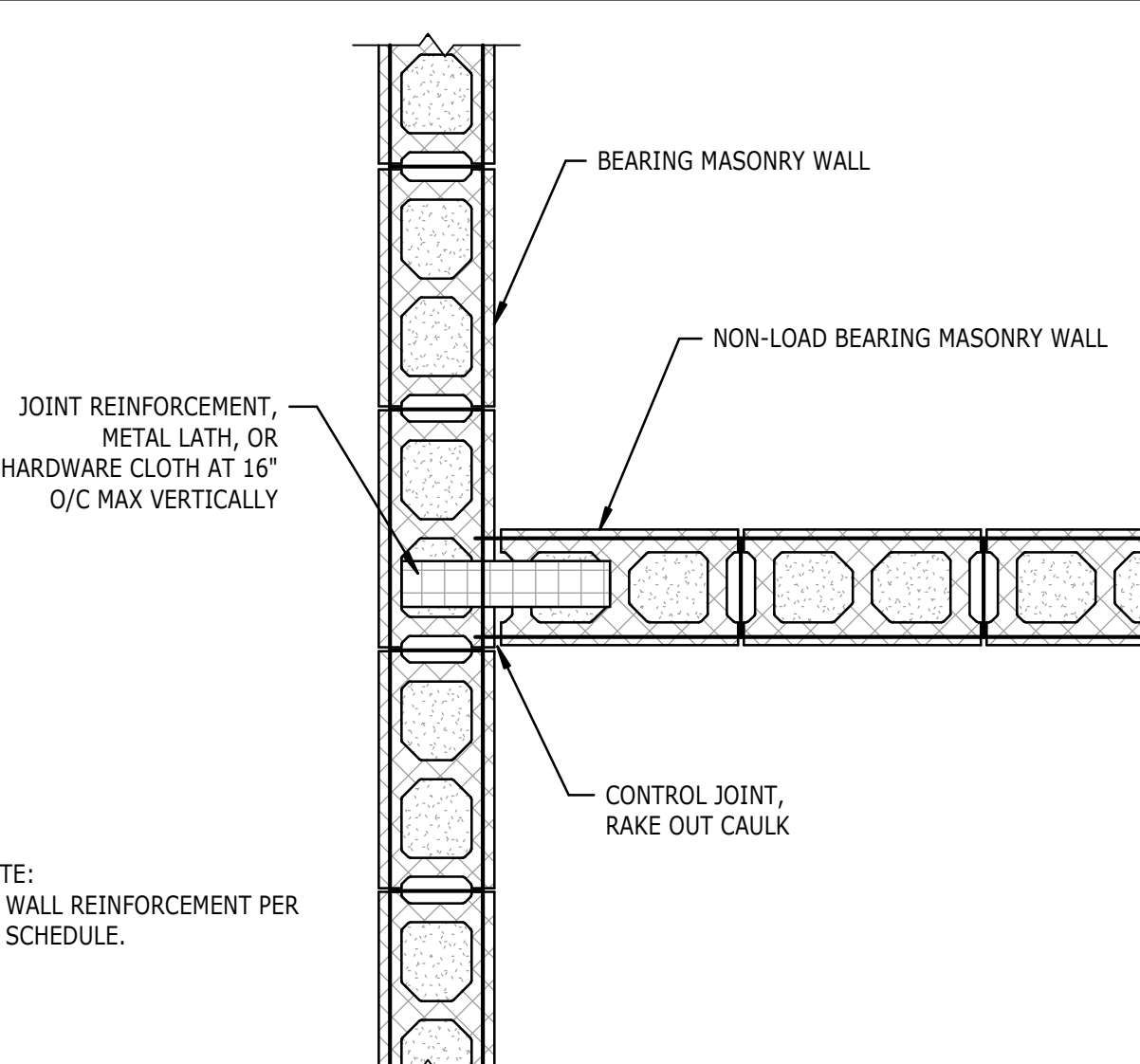
9 TYPICAL BOND BEAM CORNER

S401 3/4" = 1'-0"



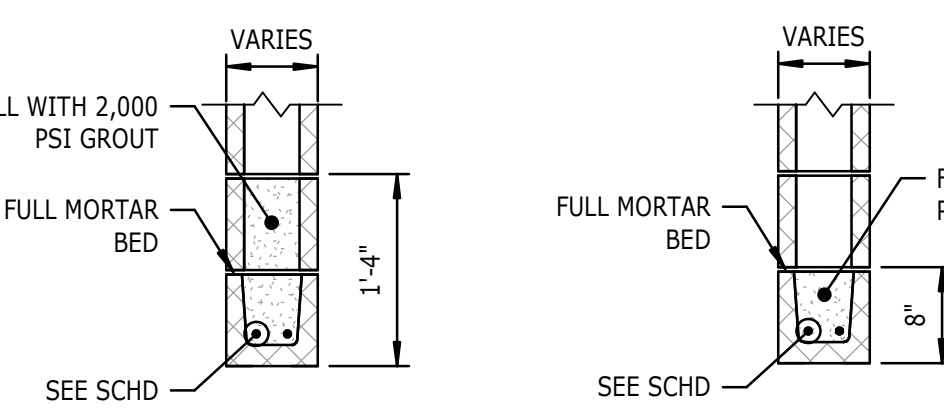
10 TYPICAL STEP IN BOND BEAM

S401 3/4" = 1'-0"



11 TYPICAL NON-BEARING WALL INTERSECTION

S401 1" = 1'-0"

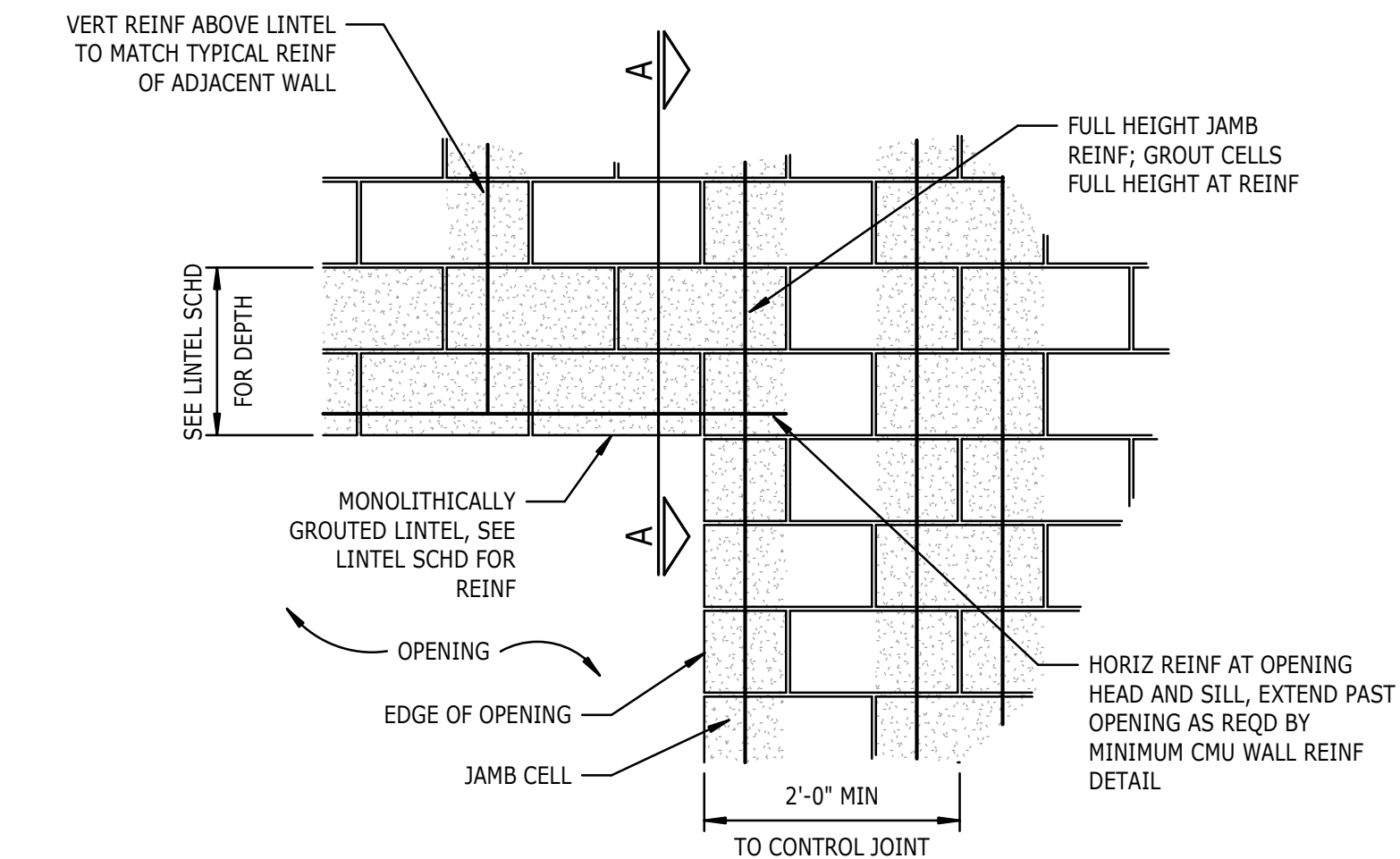


- NOTES:
- THIS SCHEDULE APPLIES TO OPENINGS IN ALL NON-LOAD BEARING WALLS AND PARTITIONS.
 - SEE ARCHITECTURAL DRAWINGS FOR SIZE AND LOCATIONS OF OPENINGS.
 - PROVIDE 8" OF BEARING AT EACH END OF ALL OPENINGS.
 - DO NOT PLACE CONTROL JOINT IN CMU LINTEL OR WITHIN 8" OF JAMB.

12 NON-BEARING LINTEL SCHEDULE

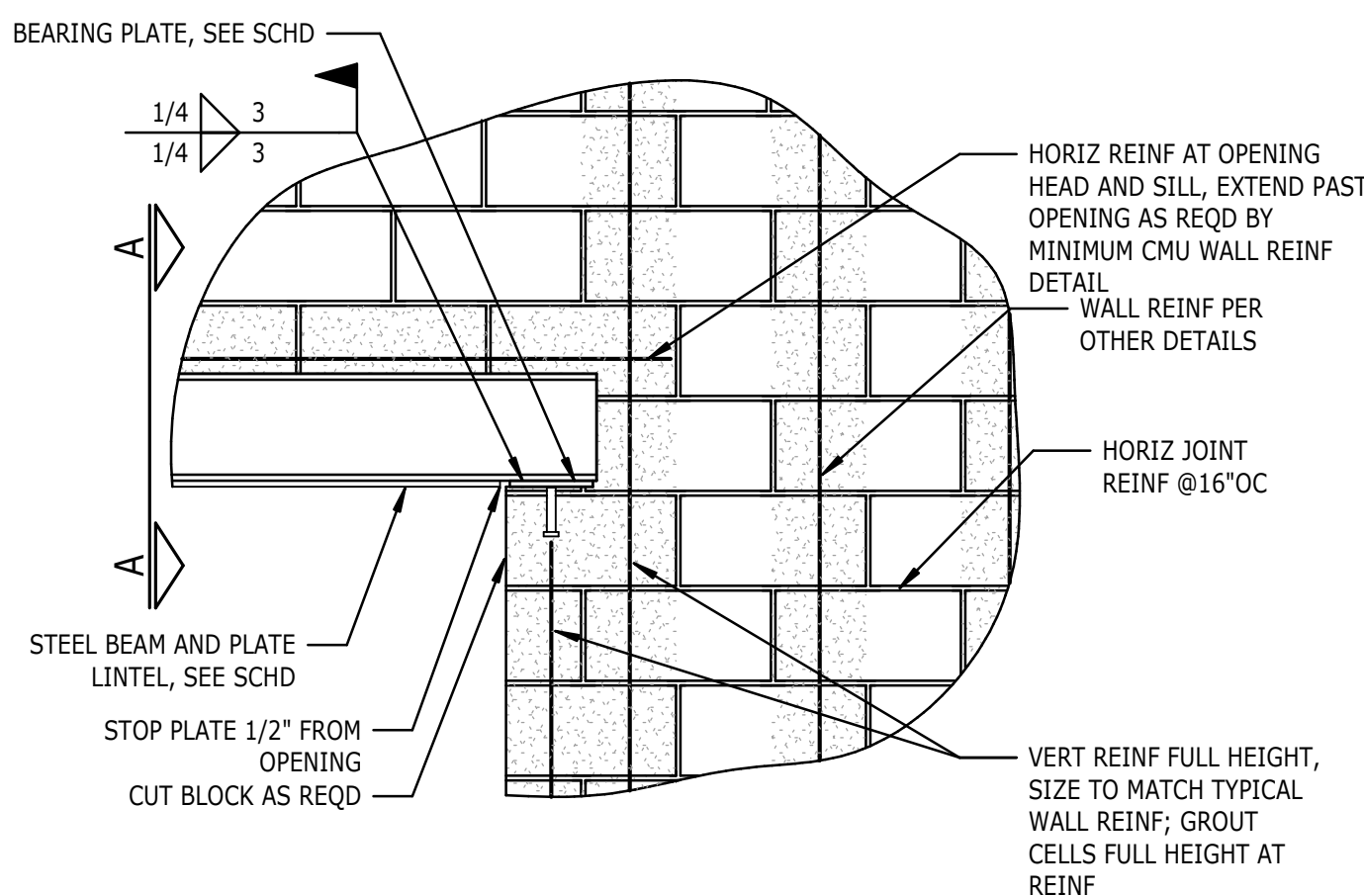
S401 3/4" = 1'-0"

LINTEL SIZE OPENING SIZE	4"x8"	6"x8"	6"x16"	8"x8"	8"x16"	12"x8"	12"x16"
3'-4"	(1)#3	(1)#3	NA	(1)#3	NA	(2)#4	NA
4'-0"	(1)#3	(1)#4	NA	(2)#3	NA	(2)#4	NA
4'-8"	(1)#4	(1)#4	NA	(2)#4	NA	(2)#4	NA
5'-4"	(1)#4	(2)#4	NA	(2)#4	NA	(2)#5	NA
6'-0"	(1)#5	(2)#4	(1)#4	(2)#4	(2)#4	(2)#5	(2)#4
6'-8"	NA	NA	(1)#5	NA	(2)#4	NA	(2)#4
7'-4"	NA	NA	(1)#5	NA	(2)#4	NA	(2)#5
8'-0"	NA	NA	(1)#6	NA	(2)#4	NA	(2)#5
8'-8"	NA	NA	(1)#6	NA	(2)#5	NA	(2)#6
9'-4"	NA	NA	(1)#7	NA	(2)#5	NA	(2)#6



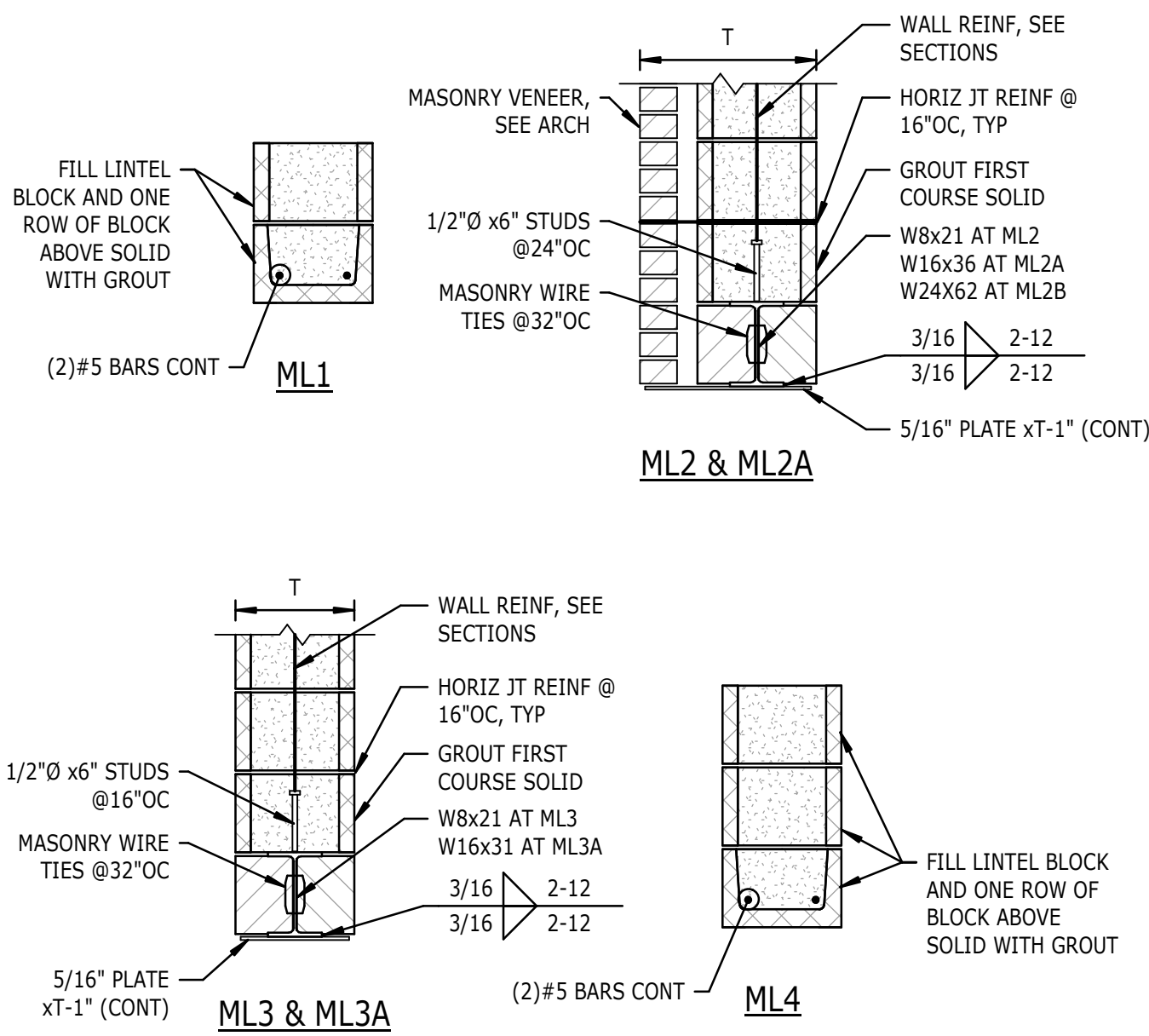
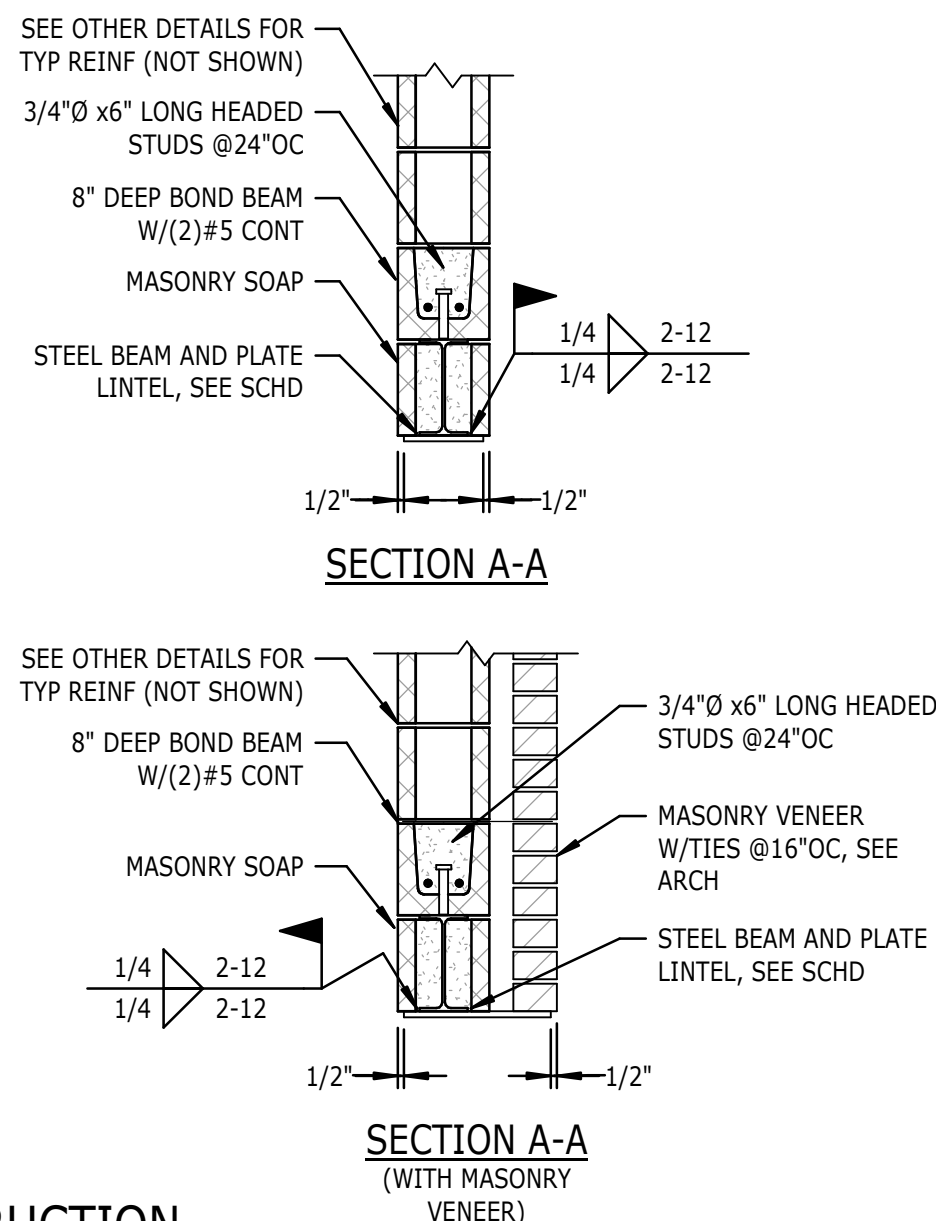
13 TYPICAL LINTEL/JAMB CONSTRUCTION

S401 3/4" = 1'-0"



14 TYPICAL STEEL LINTEL/JAMB CONSTRUCTION

S401 3/4" = 1'-0"



15 TYPICAL LOAD BEARING WALL INTERSECTION

S401 1" = 1'-0"

- NOTES:
- FOR LINTELS IN CMU WALLS, MATCH CORRESPONDING WALL WIDTH.
 - 1" MINIMUM CLEAR SPACE SHALL BE PROVIDED AROUND ALL REINFORCING.
 - WALL ABOVE LINTEL SHALL BE REINFORCED VERTICALLY SIMILAR TO WALL ON EITHER SIDE OF LINTEL.
 - HORIZONTAL REINFORCING SHALL EXTEND BEYOND EDGE OF OPENING PER LINTEL/JAMB REINFORCING DETAILS.
 - LINTELS OVER OPENINGS NOT SHOWN ON PLAN SHALL BE AS FOLLOWS (INTERIOR OR EXTERIOR WALLS):
A. FOR OPENINGS UP TO 5'-0", PROVIDE TYPE ML1 LINTEL. FOR OPENINGS UP TO 5'-0" IN CMU + BRICK WALLS, PROVIDE TYP ML1 LINTEL AND SEE LOOSE LINTEL SCHEDULE FOR SIZE OF ANGLE.
B. FOR OPENINGS 5'-1" TO 10'-0" IN CMU + BRICK WALLS, PROVIDE TYPE ML2 LINTEL WITH 8" BEARING. FOR OPENINGS 5'-1" TO 10'-0" IN CMU WALLS, PROVIDE TYPE ML3 LINTEL WITH 8" BEARING.
C. FOR OPENINGS 10'-1" TO 16'-0" IN CMU + BRICK WALLS, PROVIDE TYPE ML2A LINTEL WITH 8" BEARING. FOR OPENINGS 10'-1" TO 16'-0" IN CMU WALLS, PROVIDE TYPE ML3A LINTEL WITH 8" BEARING.
 - ALL EXTERIOR LINTELS SHALL BE HOT-DIPPED GALVANIZED.
 - STEEL FABRICATOR TO INSTALL WIRE TIES TO BEAM DURING LINTEL FABRICATION. COORDINATE LOCATION AND SPACING WITH MASONRY CONTRACTOR.

19 TYPICAL LOAD BEARING LINTELS

S401 3/4" = 1'-0"